

Historic, Archive Document

Do not assume content reflects current scientific knowledge, policies, or practices.



62.83

POSTMASTER

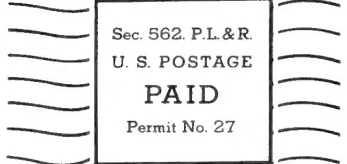
Return Postage Guaranteed

by

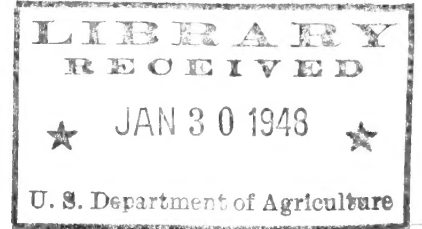
O. S. GRAY NURSERY
ARLINGTON, TEXAS

"The Grayway is the Best Way"

= 1948 =



Sec. 562, P.L. & R.
U. S. POSTAGE
PAID
Permit No. 27

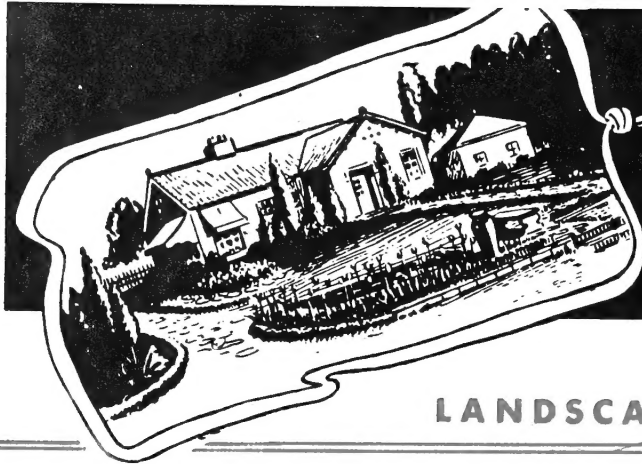


LIBRARY
U.S. Dept. of Agric.
Washington 25, D. C.



PEACE

*The Outstanding Rose
in the World Today.*



D. S. GRAY
NURSERY

TO - A Home Lover
Anywhere
U.S.A.

SAVE
MONEY!
HAVE
FUN!

ORDER A BUNDLE
OF BEAUTY...and

LANDSCAPE YOUR OWN HOME!

GRAYWAY FLOWERING & ORNAMENTAL SHRUBS

ALTHEA (Rose of Sharon). Hardy. Colorful summer bloomer. Red, White, Purple. 2 ft., 50c; Prepaid 60c.

Buddleia (Summer Lilac or Butterfly Bush). Hardy. Easy to grow. Abundance of showy fragrant flowers throughout summer. Reddish purple. Nice plant 60c; Prepaid 75c.

BÉCHTEL'S FLOWERING CRAB. Very dwarf tree. Lovely double, pink rose-like flowers in abundance. 2 to 3 ft. \$1.50; Prep'd \$1.75.

POMEGRANATE. Orange-red flowers spring and summer and large red fruits in fall. Very drought resistant. 2 to 3 ft. 75c; Prepaid, 85c.

HIBISCUS. Single and double red and large pink. Also Hardy Red. Small, 60c prepaid.

POMEGARNATE (Dwarf carnation flowering). Hardy and drought resistant. Will grow almost anywhere. Small, 35c prepaid.

SPIREA Vanhoutti (Common Bridalwreath). Graceful. Hardy. Mass of white flowers in early spring. Easy to grow. 35c and 50c sizes prepaid. Larger, not prepaid, \$1.50.

WEIGELA Rosea. Upright. Hardy. Pink to rose trumpet shaped flowers in early spring in profusion. Prepaid sizes 35c and 50c. Larger, not prepaid, 95c and \$1.25.

GRAPE MYRTLE (Grayway New Mildew-resistant Red). Immense blossom heads of most gorgeous color. The surprising beauty of this new red will charm you. Has been practically immune to mildew. 18 to 24 in. branched 75c (95c prepaid).

TREE GRAPE MYRTLE. Grayway new mildew-resistant, red pruned to formal tree shape. Not mailable. Prices, \$2.50, \$3.50, \$5.00 and \$15.00 each.

DWARF BLUE GRAPE MYRTLE. You'll fall in love with its delicately colored blossom. Somewhat dwarf. Large plants only. \$2.50 each.

RED WING. New. Attractive yellow blossoms and red-winged seeds through the hottest part of summer and until fall. Hardy and very decorative. Small plants prepaid 35c and 95c. Larger, not prepaid, \$1.25.

FORSYTHIA (Golden Bell) Abundant deep yellow blossoms in great profusion in early spring. Prepaid size 18 to 24" 60c. Larger, not prepaid, 75c and \$1.25.

CYDONIA JAPONICA (Flowering Quince). New, intense scarlet flowers in early spring before leaves. 12 to 15 in., prepaid 60c and 75c. Less 10c if not prepaid.

PERSIAN LILAC. Can be counted on to bloom, sometimes twice a year. Fragrant purple heads. 18 to 24 in., prepaid 75c and 95c. Not prepaid sizes \$1.00 to \$2.00.

CHERRY LAUREL. Beautiful glossy green leaves. Shears perfectly. B & B, \$3.00 to \$7.50.

PYRACANTHA (Firethorn) RED BERRY. Evergreen. Attractive red berries in winter. Gallon buckets, \$1.45.

PYRACANTHA Lalandi, ORANGE BERRY. Upright form. B & B, \$2.50 to \$7.50.

ITALIAN CYPRESS. The familiar, slender, tall growing plant used in front of columns, chimneys, etc. B & B. Sizes.

BLUE-SPIRE ARBORVITAE. Similar to Baker's, but foliage with slight bluish cast, more graceful. You'll like it. B & B, 3-ft. and up \$2.45; \$2.75; \$2.95; \$3.50 and \$4.50.

CEDRUS DEODARA. Silver foliage, horizontal limbs. A few beautiful specimen plants.

RED CEDAR JUNIPER. One of the most hardy of pyramidal types. None better for hedges, backgrounds, etc. B & B, \$3.45 to \$7.50.

PFITZER'S JUNIPER. Hardy low-growing spreading juniper. This is the most popular plant of its sort. B & B, \$1.95 and up.

BONITA ARBORVITAE. A perfect globe-shaped plant. Well suited for urns, at side of steps, in corners, etc. B & B, \$1.45 and \$1.95.

GOLDEN BONITA. Dwarf. 18-24 in., \$2.25.

HILLS SILVER JUNIPER. Tall-growing, pyramidal. Shears well. One of our most beautiful plants. Always evokes admiration, and a plant you will enjoy from day to day for years to come. Silvery-gray color adds variety to the usual green of shrubbery. These plants are grafted onto other roots. Only a few specimen plants B & B. \$6.50 and \$7.50.

CANNAERTI JUNIPER. Dark green, with purple berries. Upright pyramidal. Hardy everywhere. One of the finest plants we know to use against light-colored buildings. Use it where tall, columnar type of growth desired. Grafted onto other roots. You will enjoy this plant through the years. B & B, \$6.50 and \$7.50.

CHINESE BLUE COLUMN JUNIPER. Slender, pyramidal type. Will grow 20-ft. or more or can be sheared to any desired height. Foliage of attractive deep blue-gray color. Grafted onto other roots. Hardy and one of our finest plants of this type. A plant that will give you continued pleasure through the years. B & B. \$4.45; \$7.50; \$9.50; \$15.00.

HEDGE PLANTS

ABELIA, EUONYMUS, PYRACANTHA, ARBORVITAE.

AMOR RIVER PRIVET. One of the most inexpensive and at the same time one of the best, easiest to grow, hardiest plants. Fast growing. Bushy plants, 2 to 3 ft. not prepaid...20c each Small 12 to 18 in., prepaid...50-\$3.00; 100-5.00

SHADE AND ORNAMENTAL TREES

(Shipped Pruned and Ready for Planting)

CHINESE ELM. One of the most rapid growing shade trees. Drought-resistant. Useful in West Texas and similar sections.
5 to 6 ft. not prepaid 95c
6 to 8 ft. not prepaid \$1.25
1 1/4 to 1 1/2-in. diam. not prepaid \$1.95

LOMBARDY POPLAR. Tall, slender, columnar.
6 to 8 ft. not prepaid \$1.25
4 to 5 ft. not prepaid 95c
2 to 4 ft. prepaid 50c; 75c

SYCAMORE.
6 to 8 ft. not prepaid \$1.75; \$1.95
2 to 2 1/2-in. diameter not prepaid \$4.95

WEeping WILLOW. Very ornamental.
2 to 4 ft. prepaid 50c; 75c
Larger sizes not prepaid \$1.45-1.95-2.50 to 7.50

GRAPE MYRTLE TREES. (Red Only).
Not prepaid \$2.50; 3.50; 5.00 and 15.00

WISTERIA TREES. Not prepaid \$3.50; 5.00 & 7.50

FLOWERING PEACH. Double flowers, pink, red, white.
3 to 4 ft. 95c, plus 15c if prepaid.
5 to 6 ft. \$1.45

REBUD. American. Beautiful in spring.
18-24 inch 35c, plus 10c if prepaid.
4 to 5 ft., 95c, plus 15c if prepaid.

MIMOSA. Low-branching, spreading tree. Profuse bloomer, pink blossoms. 6 to 8 in. prepaid 35c. Grows rapidly.
Larger sizes not prepaid \$2.50 to \$5.00

MAGNOLIA (Southern). Specimen trees up to 10 ft. priced B & B at nursery.

ORNAMENTAL VINES

WISTARIA, Blue, Purple, Pink and White.
2-yr., 75c, plus 10c if prepaid.
Tree form, \$2.50, \$3.50 and \$5.00 not prepaid.

HONEYSUCKLE

HALL'S. Fragrant, white-yellow flowers. Evergreen.
RED TRUMPET. Attractive red flowers.
Rooted cuttings, 35c each postpaid.
1-yr. plants, 75c and 95c, plus 25c if prepaid.

CHRYSANTHEMUMS

Chrysanthemum plants, with a full list of varieties will be ready about the first of March. Write for a complete list if you would like for us to mail one to you.

GRAYWAY EVERGREENS

(NOTE—We cannot ship B & B Plants—call or send for them).

ABELIA GRANDIFLORA. Attractive evergreen foliage. Flowers May until frost. One of best plants for hedges, for foundation planting, under windows, etc. B & B plants, bushy, sheared, 55c; 95c; \$1.45.

NANDINA Domestica. Erect growing. Brilliant green to red foliage, with brilliant red berries in top of plant during fall and winter. B & B, 95c; \$1.45; \$1.95; \$3.50; \$5.00.

ITALIAN JASMINE. Seems to stand almost anything—easy to grow. Slender, drooping branches, green foliage, profusion yellow flowers early spring to late fall. May be sheared. Nice plants, B & B, 95c; \$1.25; \$1.45.

HYPERICUM Moserianum (Gold flower). A graceful attractive low-growing evergreen with showy golden yellow flowers. (We cannot ship B&B).

ELEAGNUS. Evergreen. Spreading growth. Silvery gray foliage. B & B \$3.50 and \$5.00.

ENGLISH LAVENDER. Low, bushy; gray color. Aromatic foliage. B & B \$1.00 and \$1.35.

GARDENIA Fortunei. (Everblooming gardenia). The very popular "everblooming" gardenia. A dense bush with beautiful, glossy, dark green leaves and fragrant waxy white flowers. B & B, 95c; \$1.25; \$1.75 to \$10.00.

CENIZO. (Leucophyllum texanum). Called "Purple Sage." Low dense shrub; grayish-green leaves. Profusion of small purple flowers after rains. Gallon buckets, 95c.

WAXLEAF LIGUSTRUM. A bushy, compact evergreen shrub. Thick, waxy dark green foliage. Shears well. Attractive. B & B, \$1.25 to \$2.50.

EUONYMUS JAPONICA. Very upright. Glossy green leaves. Some red berries in fall. Valuable for specimen or hedge planting. Gallon buckets, 95c.

**HOW TO GROW
BEAUTIFUL ROSES
THE GRAYWAY**

1. The rose bed must have plenty of drainage. If necessary, plant in a filled-in or raised bed so that the roots will be in well drained soil. Drainage is of utmost importance.
2. Plant roses as far away as possible from other shrubbery, tree roots, etc.
3. Thoroughly prepare the bed by spading 10 to 12 inches deep.
4. Enrich with well-rotted barnyard fertilizer.
5. Don't use any other fertilizer until after the first blooms.
6. Prune roots to about 6 inches and tops to 8 or 10 inches.
7. Set to a depth so that the top lateral or side root is the width of three fingers below top of ground. Spread the roots naturally.
8. Don't tamp (unless lightly), but use plenty of water to settle dirt around roots.
9. Don't cultivate deep around plants.
10. Loosen and cultivate soil after each rain.
11. Don't cultivate when too wet.
12. Don't water the tops of plants — water the soil only.
13. Keep foliage healthy by using a good dust or liquid spray.
14. Keep the soil slightly acid by applying, if necessary, sulphur or some other acidifier.
15. Mound up dirt around the base to protect your roses from freezing if necessary during the winter season.



GRAYWAY FIELD GROWN ROSES

ROSE PRICE LIST NO. 1948

	Cash & Carry	Prepaid
Heavy No. 1 Bush Roses	65c each \$7.50 Doz.	\$8.50 Doz.
Heavy No. 1 Climbers	75c each \$9.00 Doz.	\$10.00 Doz.
Jumbo No. 1 Climbers	\$1.00 each \$12.00 Doz.	\$14.00 Doz.

GRAYWAY ROSES ARE 2-YEAR-OLD, FIELD GROWN

There are hundreds and hundreds of different kinds of roses. We have made a selection from the older varieties that have made a place for themselves by their good qualities, and from some of the newer sorts that are making good in a big way.

RED ROSES

- POINSETTIA.** Long, pointed, brilliant red, perfectly shaped buds; attractive open blossoms. Vigorous bush; free blooming. An unusually fine red rose. Fine for cutting.
- RED RADIANCE.** Well known as one of the most fool-proof of all reds. Free blooming. Popular. A healthy, hardy bush. Nice buds.
- ETOILE DE HOLLANDE.** Some say this is the finest of all reds. Lovely, dark-red buds. A rose that will not disappoint you.
- E. G. HILL.** Ranks with the best reds. A rich, red rose that is popular and deserves to be. Vigorous; abundant foliage; free flowering.
- ROUGE MALLERIN.** A brilliant, velvet-red rose that we think is one of the best red roses in our gardens. Buds open to a glowing scarlet.

PINK ROSES

- COLUMBIA.** A good pink rose loved by many because of its lovely, shapely pink buds for cutting.
- PINK RADIANCE.** Well known as one of the most fool-proof of the pink roses. Long buds. Free blooming. Used everywhere.
- EDITOR McFARLAND.** We think this is certainly one of the best pinks. Clear pink buds and blossoms on long stems. Vigorous and hardy and healthy. You'll like it.
- EDITH NELLIE PERRINS.** Beautiful in bud or blossom. Light pink on inside and dark pink on outside of petals. We think one of our best and loveliest roses. Don't fail to include some of them in your rose garden. Lovely.

WHITE ROSES

- K. A. VICTORIA.** The standard white rose. Hardy and satisfactory. Has stood the test for nearly a half century as one of the best white roses.
- CALEDONIA.** Buds of pure white loveliness on bushes somewhat difficult to grow unless protected from blackspot. We have never seen a lovelier white.

YELLOW ROSES

- GOLDEN OPHELIA.** Many place this as one of the very best of all yellow roses. Small, tight, very lovely buds that will delight you.
- MRS. PIERRE S. DUPONT.** A compact, leafy, free blooming deep golden yellow that belongs in the top group of yellow roses. Fragrant.
- SOEUR THERESE.** Belongs with the very best of the yellow roses. Good plants with abundance of shapely golden yellow blooms. A favorite yellow in the South.

MULTI-COLORED ROSES

- TALISMAN.** Well-known and beautiful. Noted for its attractive yellow-copper buds. Strong grower and free bloomer. Our most popular multicolor rose.
- PRESIDENT HERBERT HOOVER.** Large, semi-double blooms of cerise-pink flame, scarlet and yellow. Well known and popular.

CLIMBING ROSES

- CL. PAUL'S SCARLET.** Well known for its intense scarlet display in the spring. We know of no other rose to equal it—a perfectly solid blanket and blaze of red. One of the earliest bloomers. Vigorous, healthy bush. Good for fence, trellis, or anywhere you want a good red climber.
- CL. ETOILE de HOLLANDE.** Similar to the bush but a climber, and a good one. Red. Long blooming season.
- CL. PINK COLUMBIA.** A good pink climber with the attractive Columbia-type buds and bloom. Long blooming season.
- CL. TALISMAN.** Excellent Bloomer. One of the best ever-blooming climbers.
- CL. MRS. AARON WARD.** A good climbing yellow rose that we think will please.
- CL. RED RADIANCE.** Vigorous, free blooming, hardy, one of the most fool-proof climbers that can be depended on to bloom off and on throughout the summer.

PATENTED ROSES

- PEACE** (Patent No. 591)—Perhaps the outstanding rose of the world today, and a real All-America rose, a many-times prize winner. The almost perfect buds open into immense many-petaled blossoms. One of the blossoms in the illustration measured nearly five inches across. Rich gold buds with cerise edging. As they unfold, the colors seem to change to a lighter yellow and then to a cerise or pink immense open blossom. Price \$2.00 each; 3 for \$5.00.
- MIRANDY** (Patent No. 632)—An All-America selection in 1945. Long, very large dark-red buds make this one of the outstanding reds. Free blooming. Large blooms of 40-50 petals. You will agree as to the excellence and unusual size and attractiveness of Mirandy. Price \$1.50 each; 3 for \$3.75.
- ECLIPSE** (Patent No. 172)—Long, tapering yellow buds that are almost in a class by themselves. Abundant bloomer. Vigorous bushes, and an all-around top flight yellow rose that we are happy to include in our list. Price \$1.35 each; 3 for \$3.40.

- BETTER TIMES** (Patent No. 23)—A favorite to all who know it. Planted by the hundreds of thousands. Long stem; pointed buds. A hardy, upright, free-blooming red rose; beautiful both bud and open flower. Almost thornless. Price \$1.35 each; 3 for \$3.40.
- PINOCCHIO** (Patent No. 484)—A persistent ever-bloomer. Hardy. A salmon color with gold base. Miniature buds and flowers in large clusters. This rose has been immensely popular. Good in borders or beds. Price \$1.25 each; 3 for \$3.15.
- CHARLOTTE ARMSTRONG** (Patent No. 455)—This excellent rose has been a several-times medal and prize winner. Very long, shapely buds; attractive open blossoms. Long stems for cutting. Color of buds changing to cerise in open flower, but attractive in all stages. I was first attracted to this rose when I saw the buds on exhibition at our state nursery meeting. Price \$1.50; 3 for \$3.75.
- BLAZE CLIMBER** (Patent No. 10)—Sometimes referred to as the everblooming Paul's Scarlet. A strong grower that has been very much in demand. Price \$1.50 each; 3 for \$3.75.

PATENTED ROSES

2 YEAR FIELD GROWN
Patented rose prices are set by
the owners of the patents.

PREPAID

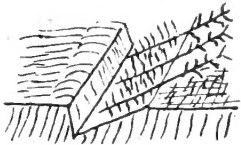
We prepay orders for patented roses amounting to \$5.00 or more.

We can include one or more patented roses in with shipments of other roses or of other nursery stock. We reserve the right to refuse to accept any order.

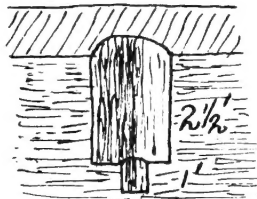
**HOW TO PLANT
GRAWAY
PAPERSHELL
PECAN TREES**

Trees will keep a week or more in the bundle if kept damp, out of the wind and not allowed to freeze.

If necessary to keep trees for some time before planting, dig a shallow trench with one sloping side and lay or "heel" the trees as illustrated, covering the roots with soil deep enough to prevent freezing.



Where large numbers of small or medium size trees are to be planted in good pecan soil, holes 10 to 12 inches in diameter, dug with a post hole digger, are economical and entirely satisfactory. Dig them 2 1/2 feet deep and then dig a smaller hole in the bottom for another foot.



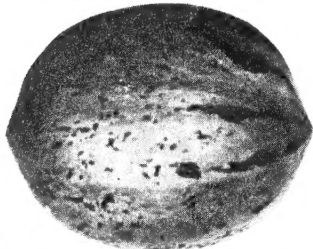
Where pecan trees are planted in poor soil, or where the larger sizes are used, dig holes 3 or 4 ft. across and 2 1/2 ft. deep, with a small hole or a trench a foot deeper at the bottom. In clay soils where the under drainage isn't good, dig the trench 1 ft. wide and 1 ft. deep right across the bottom of the larger hole. Put about 3 inches of gravel, coarse rock or crushed brick-bats in this trench. Stand two joints of 6" stovepipe (or tile) in one end of the trench with the bottom standing on the gravel, and plant the tree.

If the soil about the roots becomes waterlogged, you may see the water standing in the stovepipe and dip it out by using a dipper made by nailing a tin can on the side of a long stick. Stand the pipes straight up against the side of the hole and do not slope them in toward the tap root.

Cont'd on next page

PAPERSHELL PECAN VARIETIES

Western Varieties



BURKETT Large—40 per lb. Thin shell; 50% plump, rich kernel. Mid-season ripener; heavy producer. Popular western variety.



WESTERN SCHLEY—Early and heavy producer; about 55 per pound; 60% kernel. Moderately early ripener; vigorous grower; good yard tree.



SQUIRREL'S DELIGHT Early, heavy producer; large—50 per pound; medium shell—56% kernel. Extra early ripener; vigorous grower.



CLARK—Early, prolific, regular bearer; 65 per pound; 57% kernel, high quality. Ripens mid-season.



NUMBER SIXTY—A real papershell—about 60-70% kernel. Early producer; good bearer; one of the finest eating pecans.

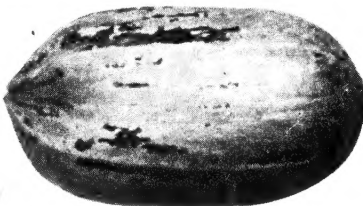
Eastern Varieties



SUCCESS—Most popular eastern variety in Texas. Large—40 per pound; medium shell; 52% kernel. Fairly early producer; ripens uniformly in mid-season. Buds late in spring.



DESIRABLE—One of the largest. Excellent cracker; early bearing; promises to be one of heaviest producers; thinner shell than Success and ripens later.



STUART—Old variety, safely used over wider territory than probably any other. Large, medium shell—48-50% kernel. Early ripener.



SCHLEY—Unsurpassed quality and flavor. Large—50 per pound. Fully 60% kernel. Brings highest market price. Very thin shell.



MOORE—An amazing producer; bears early and heavy; ripens early enough to be one of first on market; 67 per pound; 50% kernel.

NEW VARIETIES

These are a few of the new varieties we believe will produce unusual results — and which we can safely recommend for extensive trial.

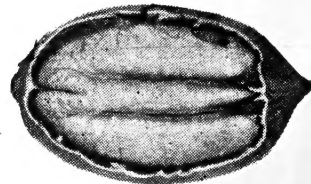
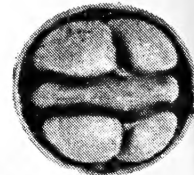
Three new pecans, Coy, Tissue Paper, and Johnson, Mature perfectly in Southern Kansas where they originated. There is a definite need for more good varieties that will mature properly north of Central Oklahoma where frost catches some.

COY — Slightly larger than Tissue Paper. One of the most attractive nuts in bulk, that we have seen. Excellent kernel that comes out clean.

TISSUE PAPER — One of the thinnest shells; sweet, oily and fine flavor — a beautiful meat. Original tree said to be a good producer, with record of bearing every year.

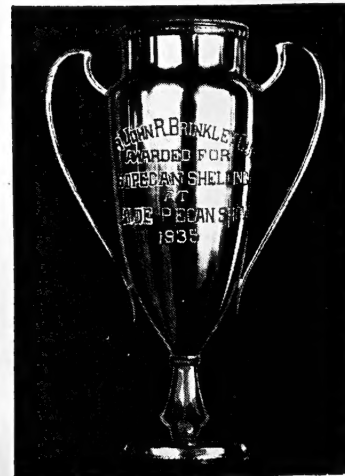
JOHNSON — Also from Southeastern Kansas. A very heavy producer that ripens early in September. A long, slender nut.

THE NEW BRAKE PECAN



If there could be such a thing as a perfect pecan, this must be the nearest thing to it yet produced. Extraordinarily thin shell, about the same thickness as an eggshell. Regular shape. Smooth, plump kernels, 60% to 66% of total weight. We have never seen its equal in cracking-out qualities. Bears 2 to 5 nuts per cluster. Very regular fruiter, early producer.

The first patented pecan, introduced by Mr. Wm. Brake, Rocky Mount, North Carolina. We have exclusive distribution of this wonderful pecan for the Southwest.



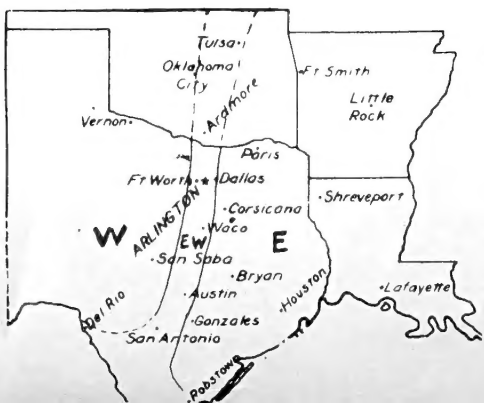
Cup awarded to Brake for "Best Shelling Pecan"—1935.

O. S. GRAY NURSERY—Arlington, Texas

Hints on Selecting Varieties

Use map as a general guide. In the area "EW" as a rule use Eastern varieties in the lowlands and Western varieties on uplands. East of this middle belt, marked "E", use only Eastern varieties. West of the middle belt, marked "W", Western varieties are preferred because of their early and heavy production, but Eastern varieties may also be used.

For Northwest Texas, Western and Northern Oklahoma, early ripening becomes important; so choose early and moderately early ripeners. Stuart seems to do well farther north than any other southern variety. Note the Kansas and Kentucky varieties for the farthest north locations.



TREE TOPS YIELD MONEY CROPS



**EARLY
TO
BEAR!**

When you set out GRAYWAY Papershell Pecan Trees you won't have to wait long—because GRAYWAY Trees are EARLY TO BEAR!



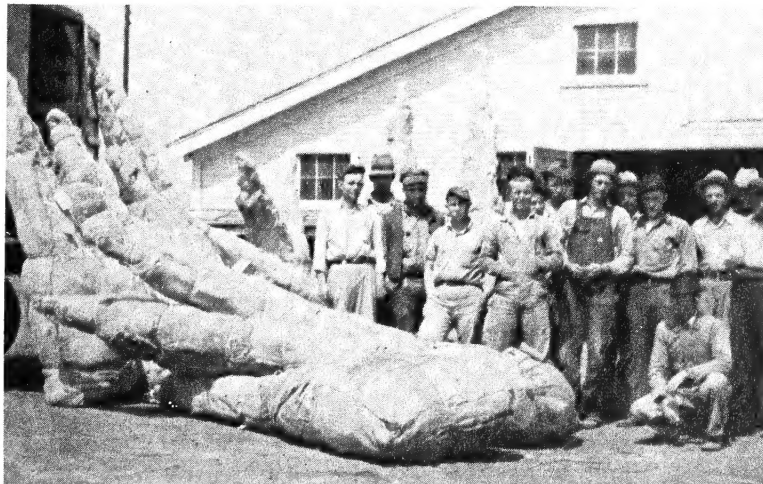
G. W. Bechtel of Tarrant County, Texas, inspects his \$10,000.00 crop in his young 50-acre GRAYWAY paper-shell pecan orchard about 12 years old.

FREE PLANNING SERVICE

We have a complete, free planning service for our customers. In addition to helping you select the best varieties, we will prepare, free of charge, a tree plan or layout for your orchard. We invite you to use our many years of experience in growing and developing GRAYWAY trees for highly profitable tree-farming.

The Most Beautiful SHADE TREE

UNCLE SAM A GRAYWAY CUSTOMER



This large shipment of GRAYWAY Papershell Pecan Trees is for the United States Government, Department of Agriculture, for one of the Government's experimental papershell pecan orchards.

NEW SCIENTIFIC ROOT TREATMENT

A PRODUCT OF MODERN
RESEARCH



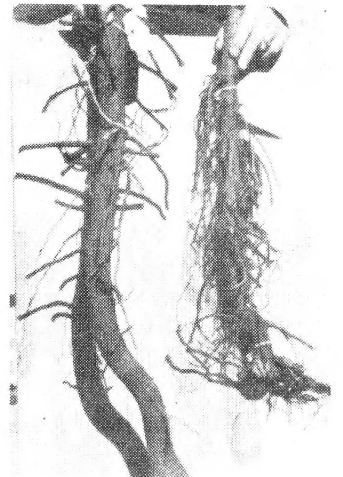
AMAZING DISCOVERY

O. S. Gray Nursery is the first to offer this new Scientific Root Treatment developed by workers in the U. S. Pecan Laboratory in Texas.

A new world is emerging from the test-tubes of America's research laboratories. The chemical substance (Indole butyric acid) with which GRAYWAY Pecan Trees are treated is a part of this new world of finer things for better living.

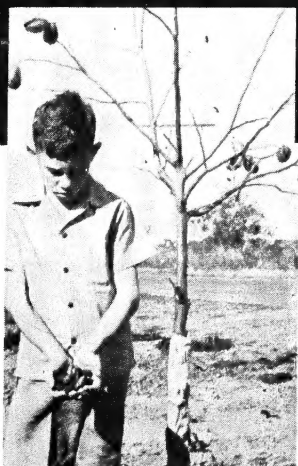
The photographs reproduced on this paper speak for themselves—show conclusively how this new chemical substance causes new root growth on transplanted pecan trees to an amazing degree.

And remember—you may obtain GRAYWAY Papershell Pecan Trees with this new scientific chemical root treatment.



SEE THE DIFFERENCE!

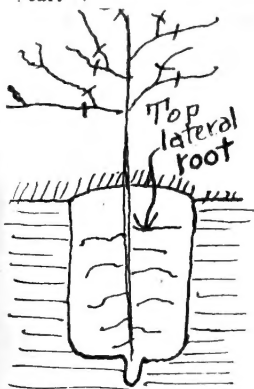
Look at the two roots pictured above. What a difference! Here you see treated and untreated roots of two pecan trees, same age; transplanted, then dug at the end of the first season. Photograph shows amazing new root growth stimulated on TREATED roots shown at right, compared to root at left that had no treatment.



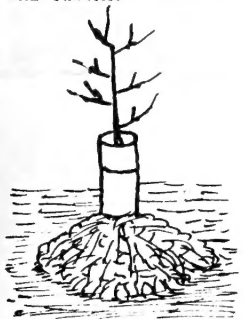
Count 'em — fifteen fine Papershell Pecans, as delicious as any you've ever eaten, the second summer after planting this GRAYWAY Tree. This is not at all uncommon. Can't you see that it won't take long for your GRAYWAY Trees to bear before the money will begin to roll in?

When you set out GRAYWAY Papershell Pecan Trees you won't have to wait long — because GRAYWAY Trees are EARLY TO BEAR!

Plant your pecan tree so that the upper or top lateral root is about the width of your four fingers beneath the top of the soil as illustrated. Fill the hole with good top soil. Use no fertilizer until the second year.



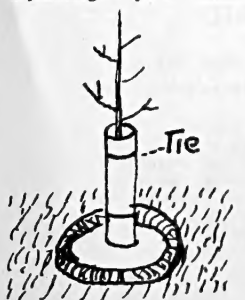
As you fill the hole, settle the dirt well with water. It's a good idea to give the tree another good watering within about a week, not because the tree needs the water, but to be sure the dirt is well settled about the roots, then wrap the trunk with PAPER (any kind). This wrapping should extend from the ground to the first limb (if no limbs, to within 8 or 10 inches of the top) and should consist of enough thicknesses to last throughout the first summer. This wrapping is VERY IMPORTANT as it serves as the best protection we know of against borers, sunburn and rabbits.



Then, unless you live in a very dry climate, mound dirt up around the base of the tree, making the mound large enough to run water away from the tree and the hole in which it was planted. Do NOT water the tree any more until it gets dry after growth starts in the spring. Too much water during the winter or dormant season often sours the roots and kills the tree.

When watering time comes in late spring or summer, tear down the mound and make a depression or basin about the base of the tree to hold water.

During dry periods yard trees should be watered anywhere from once or twice per week to once every two weeks, depending upon need.



GRAYWAY PAPERSHELL PECAN TREES

PRICE LIST No. 48

All Prices F. O. B.
Arlington unless
otherwise noted.

Use regular Order Blank enclosed in this catalog, or just any sheet of paper, for ordering GRAYWAY Papershell Pecan Trees. Be sure to state variety, quantity and size.

O. S. GRAY NURSERY ARLINGTON, TEXAS

Size No. 608

Papershell Pecan
Trees

Size No. 408

Size No. 308

Size No. 258

Size No. 178



Size	Diameter (Inches)	Approximate Height	1-5 Trees (Each)	6-29 Trees (Each)	30-74 Trees
No. 178		2 to 3 ft.	\$ 1.75) Same price, any quantity. Add 25c per tree for postage	
No. 208		3 to 4 ft.	2.00		
No. 258	1 1/16 to 1 3/16	4 to 6 ft.	2.50	2.35	2.25
No. 308	1 3/16 to 1 5/16	5 to 7 ft.	3.00	2.85	2.75
No. 408	1 5/16 to 1 7/8	6 to 8 ft.	4.00	3.75	3.50

Many of the following two sizes have borne a few nuts in the nursery row.

No. 608	1-1/8 to 1-3/8	7 to 9 ft.	6.00	5.50	5.00
No. 858	1-3/8 to 1-9/16	8 to 10 ft.	8.50	8.00	7.50

BEARING SIZES Most of the following sizes have borne one or more crops of papershell pecans in the nursery field. Some have borne five or six crops.

No. 1158	1-9/16 to 1-3/4	8 to 11 ft.	11.50	11.00	NOTE: If these bearing sizes are to be packed for shipment, add 10% for packing material.
No. 1378	1-3/4 to 2	10 to 12 ft.	13.75	13.25	
No. 1658	2 to 2-1/2	11 to 14 ft.	16.50	16.00	
No. 2258	2-1/2 to 3	13 to 16 ft.	22.50	22.00	

SPECIALS: We can quote on trees up to 5 inches in diameter that have borne good crops of pecans for several years.

ALL BEARING SIZE GRAYWAY TREES ARE GIVEN OUR SCIENTIFIC CHEMICAL ROOT TREATMENT WITHOUT EXTRA CHARGE.

- (1) Add 5c per tree if Scientific Chemical Root Treatment is desired.
- (2) Add 25c per tree for Coy, Tissue Paper, Johnson, Major, Green River and Brake.
- (3) Add 50c per tree for Mayhan.
- (4) These prices are F.O.B. Arlington. Write for prices on large quantities of trees.
- (5) All sizes except 178 and No. 208 should be sent by express or motor freight.
- (6) The length of the root is NOT included in the height of the tree.
- (7) Trees will be pruned, ready for planting, unless you instruct us otherwise.

Minimum Order
For Prepaid
Shipment Is \$5.00

GRAYWAY METHOD OF PECAN TREE CLASSIFICATION

Our customers have been so well pleased with our method of classifying our Western Grown papershell trees that we are using it again. The usual method of using height alone very often places tall, slender trees in a high price class where they do not belong. The diameter of a tree is, in our opinion, the best indication of its value; so we go almost altogether by diameter rather than by height.

The illustrations and specifications are for your guidance, to make it easy for you to order just what you want. Some varieties and trees vary slightly. Bear in mind that no two trees are exactly alike. We have chosen trees in the illustrations as fair representatives of the various classes.

PARCEL POST SIZES. Sizes Nos. 178 and 208 may be sent by parcel post right to your mail box. The No. 178 have papershell tops two feet or more in length and are dug about 2 1/2 feet deep, making the entire tree nearly five feet long. The No. 208 is a larger tree, running nearly six feet long, root and top. Both these sizes will transplant easily, and with reasonable care nearly 100% of them should live and grow.

GUARANTEE: We guarantee our papershell trees to be true to variety and in first-class condition when they leave the nursery, but we do not guarantee them to live or grow — see our guarantee terms elsewhere in our catalog.

SAVE! by using "B" GRADE TREES

No. 258—Deduct \$.25 per tree
No. 308—Deduct .50 per tree
No. 408—Deduct .50 per tree
No. 608—Deduct 1.00 per tree
No. 858—Deduct 1.00 per tree
No. 1158—Deduct 1.50 per tree
No. 1378—Deduct 1.50 per tree
No. 1658—Deduct 1.50 per tree

"B" GRADE TREES are just as good fundamentally as the Standard "A" Grade, except they have trunks or tops not straight enough to be put in the top grade. Some of them may have a slight wound or skinned place that will heal over and not hurt the real worth of the tree. If you are planting an orchard and want your money to go just as far as possible and don't mind staking a few trees, we recommend the "B" Grade trees for your consideration. It is the grade that I nearly always use in my own orchard planting, for experience has shown me that crooks in young trees don't amount to much as they grow out naturally as the tree gets older.

We have been selling "B" trees for many years to customers who have come to the nursery where they could see them in person, but this is the first time we have ever put them in our catalog. They are real "economy" trees.

"C" GRADE TREES are too crooked for the "B" grade—often have tops bent over at quite an angle and need staking for a year or two. Some have a short root or a split limb, etc. If you have a piece of hazardous bottom land or a field where you don't want to spend much money for trees, perhaps the C-grades will fill the bill. They usually sell for about half price, and a good percent of them should develop into nice trees.



You CAN GROW PEACHES LIKE THESE!

(Listed in approximate order of ripening)

MAYFLOWER. Earliest to ripen. White flesh; juicy; semi-cling.

RED HAVEN. New, yellow flesh, freestone. Ripens few days after Mayflower, making it one of earliest yellow freestones. Nearly fuzzless; sweet. Hardy, vigorous, productive. Available in June-bud size only.

GOLDEN JUBILEE. Popular early yellow freestone. Excellent quality; productive and sure bearer. Fine for canning, table or market.

MAMIE ROSS. A delicious, early, white fleshed semi-cling. Melting, juicy and sweet. One of finest table peaches. Too soft to ship.

HALEHAVEN. Large, beautifully colored freestone. Yellow flesh. Rapidly becoming one of best commercial peaches. Ripens about 2 weeks ahead of Elberta.

ELBERTA. The well-known, yellow-fleshed freestone familiar to everybody.

J. H. HALE. One of largest yellow-fleshed freestones. Attractive color, and brings good price. Often needs pollinizer.

RED INDIAN CLING. Well-known for pickling and preserving.

FRANK. A yellow-fleshed cling that seems to do well in Central Texas. Fruit small unless on good soil and kept thinned. Regular producer in Central Texas but has been caught with frost along with other varieties in Northern Texas.

PEACH PRICES

Size	Not Prepaid	Prepaid
18- to 24-in.	50c Ea.	60c Ea.
June Buds	\$1.35 per 3	\$1.60 per 3
HEAVY BRANCHED SIZES		
4 to 5 ft.	95c Ea.	\$1.45 Ea.
5 to 6 ft.	\$1.45 Ea.	Can't Mail
6 to 7 ft.	\$1.95 Ea.	

APRICOTS

SHAMROCK. Origin in N.W. Texas. Claimed very hardy. (18-24 in. size only)

EARLY GOLDEN. A rich, yellow freestone of good quality.

MOOREPARK. Large, yellowish with red cheek. Prolific freestone. Widely adapted. 18 to 24 in. 60c ea; 75c prepaid. 4 to 5 ft. \$1.45 ea.; \$1.60 prepaid.

PLUMS

SIX WEEKS. Earliest of all. Large, bright red. Vigorous.

BRUCE. Very large, red plum. Good market and shipper. One of most profitable kinds. Eating or cooking.

SANTA ROSA. Large, dark red, good quality. Good producer. This is one of those you buy at the fruit stand.

AMERICA. Yellow with red cheek. Enormous producer. One of best and surest to bear. Cooking.

SAPA. Small, dark skin and flesh. Tree dwarfy, but a sure and prolific producer of one of the finest of all cooking plums.

PRICE: Can furnish 18 to 24 inch plum trees in all the above varieties except Sapa. 60c each, or 75c each if prepaid. Can furnish plums on nematode and disease resistant Marianna rootstocks as long as they last in the following:
3 to 4 ft. \$1.25 ea.; or \$1.40 ea. prepaid.
4 to 5 ft. \$1.45 ea.; or \$1.60 ea. prepaid.
5 to 6 ft. \$1.75 ea.; too large to mail.
6 to 7 ft. \$1.95 ea.; too large to mail.

PEARS

TEXKING. See Texking prices elsewhere.

GARBER. Large, round; widely grown for eating and canning. Ripens on tree.

KEIFFER. Very disease-resistant; seldom affected by blight. This is the common southern preserving pear. Vigorous and prolific.

DOUGLAS. One of heaviest producers. Bears on young trees. Blight resistant. Medium size.

LeCONTE. A creamy-colored, smooth, medium size pear. Juicy, good flavor. One of best.

Size	Not Prepaid	Prepaid
2 to 3 ft.	90c	\$1.00 Ea.
3 to 4 ft.	\$1.25	1.35 Ea.
4 to 5 ft.	1.45	1.55 Ea.

FIGS for Health

Bears Figs First Summer
Famous TEXAS EVERBEARING variety. Bears heavily on little trees just a few inches high in nursery rows. Figs June to frost. Good size and excellent flavor. Prices, Small 35c; Medium 50c; Large 75c; Ex. Large 95c. Add 25c per plant if prepaid.

The EVANS Varieties not available this season.

GRAPES

CHAMPANEL. Will grow where others die because of soil disease and nematode. Does well on lime soils. Try it if others have died out on you.

FREDONIA. A new, blue-black grape of high quality. Large grapes, sweet and juicy. One of best.

CARMAN. One of most fool-proof and dependable. Black berry. Prolific. Popular.

NIAGARA. A white, high-quality grape grown all over the South. Fine flavor. Vigorous.

GRAPE PRICES: Small 35c; Med. 50c; Heavy 75c ea. Add 20c each if to be prepaid.

APPLES

KING DAVID. Medium size, early red. Enormous production at early age.

DOUBLE RED DELICIOUS. Large; bright red all over. Bears young; profitable.

YELLOW DELICIOUS. Popular, golden yellow that bears young and well. Makes money.

HOLLAND. (Kincaid). First discovered by R. B. Alexander of Weatherford growing in an old apple orchard. Promises to be basis of a commercial apple industry because of its large size, attractive appearance, early production and the fact that it comes on market in early August when apples are scarce and bring high prices.

SIZE	Not Prepaid	Prepaid
3 to 4 ft.	85c	\$1.00
5 to 6 ft.	\$1.25	1.40

ORIENTAL PERSIMMONS

"Possum in de 'simmon tree
Raccoon on de groun'"

TANE NASHI. Large, acorn shaped fruits. Seedless. Fine quality and good home or market.

EUREKA. Resemble large red tomatoes hanging on tree. Delicious. One of finest for home table.

SIZE	Not Prepaid	Prepaid
3 to 4 ft.	\$1.60	\$1.75
5 to 6 ft.	2.50	2.75

CHINESE JUJUBE

One of most unusual and delightful combination fruiting and decorative trees brought to this country from far-away China. Prepaid size \$1.25. Larger, \$2.95 not prepaid.

BERRIES

THORNLESS GIANT BOYSENBERRY. Enormous size, berries nearly two inches long. We could hardly believe our eyes when we saw them. Canes 15 to 20 ft. long. Put on a trellis and keep berries out of dirt. Delicious. Fine table or canning, juice, etc. You'll enjoy picking berries without bothering about thorns.

NECTAR BERRY. Similar to Boysenberry in size of berry, growth, etc. Somewhat different flavor claimed to be very superior. We think it a fine berry.

EARLY WONDER BLACKBERRY. (Same as Dew-Black). We think this is the best of all blackberries. Hardy. Prolific producer of large berries. Ripens May-June.

AUSTIN DEWBERRY. A vigorous, prolific dewberry that has been profitable and popular many years. Ripens May-June.

TREE EVERBEARING BLACKBERRY. Bushes 4 or 5 feet high. Has yielded 6 gallons per bush! Ripens last of June and continues through August. Gives you berries after others quit and brings highest prices. Write for special circular describing this remarkable berry. 3 plants postpaid, \$2.75; 6 plants \$5.00 prepaid.

GEM EVERBEARING STRAWBERRY. The outstanding "everbearing" strawberry. Very large, bright red berries of good quality. Prepaid prices, 25, \$1.25; 50, \$2.00; 100, \$3.00.

BLAKEMORE STRAWBERRY. Perhaps the most widely planted variety. Vigorous grower. Prepaid prices .25, \$1; 50, \$1.75; 100, \$2.75.

	10		25		100	
	Pre.	Not Pre.	Pre.	Not Pre.	Pre.	Not Pre.
Thornless Boysenberry						
Thornless Youngberry	\$1.50	\$1.40	\$3.50	\$3.35	\$12.50	\$12.00
Austin Dewberry						
Nectar Berry						
Early Wonder Blackberry	1.00	.90	2.00	1.85	5.95	5.75

Dwarf or BUSH CHERRY

Amazingly prolific. Grows only few feet high. Also a good ornamental or flowering shrub with veritable snow bank of white flowers. Often has few fruits first summer.
Young plants, 60c; prepaid 75c.
Ready-to-bear plants \$1.25; \$1.45 not prepaid.

Improved BLACK WALNUT

THOMAS. An improved black walnut with comparatively thin shell. Cracks easily; kernels separate readily, easily in quarters and often in halves. Makes a beautiful, long-lived tree. Bears very young and a very heavy producer.

3 to 4 ft.	\$1.95 Ea. not prepaid
5 to 6 ft.	2.95 Ea. not prepaid
6 to 7 ft.	3.95 Ea. not prepaid

YES! IT'S TRUE!

**The Amazing Story of the
GRAYWAY**

**"TEXKING"
THE NEW PEAR
CREATED BY A COW!**

**TRUTH IS STRANGER
THAN FICTION**

And you'll agree after you have read this story of the new GRAYWAY "TEXKING" PEAR—for the truth is that this pear was actually created by a cow.

Here's the true story. Several years ago a Texas family purchased a pear tree. This family owned a cow that, like other cows, enjoyed eating green grass to give a lot of good white milk, as is the habit of all good cows.

One day the family tied a rope around her neck—not to hang her, of course, but to keep her from wandering off. They tied the rope to a stake in the back yard so that she might eat the luscious grass that grew near the pear tree.

The cow managed to get the rope wrapped securely around the young pear tree, breaking it off beneath the ground. It surely looked like the end of that pear tree. But no—soon a green sprout appeared from below the graft, from the original wild or seedling roots. This sprout grew rapidly and soon began to bear pears. And what pears! Nobody had ever seen anything like them. Experts in the U. S. Department of Agriculture said that so far as they knew, it was unlike any named variety.

The cow had created an entirely new pear. The TEXKING is an early bearer—little trees only 3 to 4 feet high. The fruits are large, russet in color, and get sweet on the tree. It ripens early and keeps a long time. I have kept them in my refrigerator until after Christmas. Flesh is smooth, with practically no grit. It's grand for canning and preserving—and tastes mighty good right off the tree. We have never seen a pear produce more heavily, and the tree is a good, upright grower.



Photo shows actual size of the new GRAYWAY "TEXKING" Pear—the pear that was created by a cow.



Nº 21008 D STATE OF TEXAS ORIGINAL

DEPARTMENT OF AGRICULTURE

OFFICIAL NURSERY INSPECTION CERTIFICATE

THIS IS TO CERTIFY THAT THE **NURSERY STOCK**

grown, exhibited or held for sale by **O. S. GRAY NURSERY**

at **ARLINGTON** County of **TARRANT** State of Texas,

has been inspected by a duly authorized inspector of this Department in accordance with the provisions of the Orchard and Nursery Inspection Laws of the State of Texas, and was found to be apparently free from dangerously injurious insect pests and plant diseases.

A printed copy of this Certificate on any shipping tag attached to any shipment of **NURSERY**

STOCK is authority to any freight or express agent in Texas to accept same for transportation.

THIS CERTIFICATE IS VOID AFTER SEPTEMBER 1, 1948.

Approved: *E. McDonald* Austin, Texas, November 13, 1947. *Walter Smith*

Commissioner of Agriculture. Chief Inspector of Orchards and Nurseries.

PRICES—TEXKING PEAR		
	Price Each	
Size	Not Prepaid	Prepaid
2 to 3 ft.	\$2.25	\$2.50
3 to 5 ft.	3.25	3.50
5 to 6 ft.	4.75	Too large to mail. Have borne pears.
7 to 8 ft.	7.50	

YES SIR!

**THE GRAYWAY TEXKING
PEAR BEARS EARLY**

RUSH...IMPORTANT!

Hope the ink is dry when it reaches you, as this is a copy of our new catalog and price list, fresh from the printing press.

Our printer has just furnished us with a limited number of copies of our new catalog and price list, and we are rushing one right on to you without delay. You should receive it promptly, and if you will send your order right away, you will have first chance at our stock for this season.

Yes! You can get Papershell Pecan Trees

right from our own growing fields. In our large Grayway Pecan Nursery, there are Papershell Pecan Varieties for all parts of the country...you can choose from the largest assortment of varieties that we know of, and get varieties suited for your own particular needs. Our new catalog will help you select the right varieties.

They come "Direct to You"

right out of our nursery fields here at Grayway. When you send your pecan tree order to us, remember that you will get Papershell pecan trees right from our own fields. They will be trees that we grew right here - - direct from our nursery to you. You can grow Papershell Pecan Trees like Mr. Bechtol...read about his \$10,000.00 crop in his young Grayway papershell pecan orchard.

Our Scientific Chemical Root Treatment

makes new roots grow quickly and abundantly on transplanted pecan trees. This new treatment was developed by scientists of the U.S.Department of Agriculture's laboratory. Our new Grayway catalog tells you all about it.

TEXKING Pear Trees are now available

in limited quantity for the first time. This remarkable, early-bearing, prolific pear was created by a cow...read the full story in the catalog. We described this pear in our catalog last year, but had no trees to sell at that time. Send your order early and be the first in your community to grow it. A man who got one of these trees from us for a test about four years ago, brought us the pear illustrated in our catalog and said, "Mr. Gray, I wouldn't take \$500 for my Texking pear tree if I couldn't get another to replace it."

6-gallons of Blackberries from a single bush

of our new Tree Everbearing Blackberry! The originator of this berry tells me that his entire field averaged 5 gallons per plant. Bears from June through August and affords you with delicious berries long after other berries have quit.

Our JUMBO Size, Two-Year, No. 1 Rose Bushes

are the finest rose bushes we have had for ten years. Most of them are western-grown, and I believe we can promise you some of the finest rose bushes you have ever seen.

"The Grayway is the Best Way" We are looking forward to serving you,

O. S. GRAY NURSERY

See Other Side

O. S. Gray OWNER

BEFORE SENDING IN YOUR PECAN TREE ORDER CHECK WITH FOLLOWING INFORMATION

APPROXIMATE SIZES AND VARIETIES OF PAPERSHELL PECAN TREES AVAILABLE 1-6-48

		#178	#208	#258	#308	#408	#608	#858	#1158	#1378	#1658	#2258
A	Burkett	XX	XXX	XXX	O	F	XXX	XXX	XXX	XXX	X	F
B	Burkett	O	XX	XX	XX	XXX	XXX	XX	XX	XX	X	F
A	W.Schley	XXX	XXX	XXX	XX	XX	X	XX	XX	F	F	O
B	W.Schley	F	X	X	F	X	X	X	F	F	F	O
A	Sq.Delight	F	XXX	O	O	XX	XX	XXX	XX	XX	F	O
B	Sq.Delight	F	X	X	X	XXX	XXX	XXX	XXX	F	F	O
A	SanSaba Imp.	O	O	O	O	O	O	F	F	F	O	O
B	SanSaba Imp.	O	O	O	O	O	F	F	O	O	O	O
A	Clark	O	F	F	O	O	F	XX	X	X	F	O
B	Clark	O	O	F	F	X	X	X	X	O	O	O
A	Number 60	O	F	O	O	F	F	XX	XX	X	X	O
B	Number 60	O	F	F	F	XX	XX	XX	XX	X	XX	O
A	Success	XX	XXX	X	X	F	O	X	X	X	F	O
B	Success	O	F	F	F	F	F	F	X	X	X	O
A	Desirable	XX	XXX	F	X	O	O	XX	X	F	O	O
B	Desirable	O	O	O	O	F	X	XX	XX	F	O	O
A	Stuart	XX	XXX	XXX	XX	X	X	X	F	F	F	O
B	Stuart	F	F	F	F	F	X	X	F	F	O	O
A	Schley	O	F	F	F	O	X	X	X	F	F	O
B	Schley	O	O	O	O	F	F	F	F	F	O	O
A	Delmas	O	O	O	O	O	O	F	F	F	F	O
B	Delmas	O	O	O	O	O	O	F	F	F	F	O
A	Moore	O	O	O	O	O	F	X	X	X	X	O
B	Moore	O	O	O	O	F	X	X	F	F	O	O
A	Brake	F	F	F	F	F	F	XX	X	X	F	O
B	Brake	O	O	O	O	O	F	X	X	F	O	O
A	Coy	O	O	O	F	O	F	F	O	O	O	O
B	Coy	O	O	O	F	F	X	X	O	O	O	O
A	Tissue Paper	O	O	O	O	O	F	F	F	F	F	F
B	Tissue Paper	O	O	O	O	F	XX	X	F	O	O	O
A	Johnson	F	F	F	F	F	F	X	X	X	X	F
B	Johnson	F	F	F	F	F	F	X	X	X	X	F
A	Major	O	O	O	O	F	F	F	F	F	F	F
B	Major	O	O	O	O	X	F	F	O	O	O	O
A	Green River	O	O	O	X	F	X	X	F	F	O	O
B	Green River	O	O	O	F	X	XX	X	F	O	O	O
A	Mahan	O	F	F	O	O	O	O	O	O	O	O
B	Mahan	O	O	O	O	O	O	O	O	O	O	O
A	Commonwealth	O	X	X	X	X	X	X	X	F	F	O
B	Commonwealth	O	F	F	F	X	F	F	F	O	O	O

O - Means none available
 F - Very few available
 X - Means a very limited supply
 XX - Only a fair supply
 XXX - A plentiful supply

O. S. GRAY NURSERY
 BOX 513
 ARLINGTON, TEXAS

QUANTITY	VARIETY	SIZE	PRICE EACH	TOTAL
(Bring Second Total Forward to Here)				
RED BUSH ROSES				
	Etoile de Hollande			
	E. G. Hill			
	Red Radiance			
	Rouge Mallerin			
	Poinsettia			
PINK BUSH ROSES				
	Edith Nellie Perkins			
	Editor McFarland			
	Pink Radiance			
YELLOW BUSH ROSES				
	Golden Dawn			
	Golden Ophelia			
	Mrs. Pierre S. DuPont			
	Soeur Therese			
WHITE BUSH ROSES				
	K. A. Victoria			
	Caledonia			
TWO-TONE ROSES				
	Pres. Herbert Hoover			
	Talisman			
CLIMBING ROSES				
	Blaze			
	DuPont			
	Holland			
	K. A. Victoria			
	Pres. Herbert Hoover			
	Paul's Scarlet			
	Red Radiance			
	Pink Radiance			
	Red Columbia			
	Talisman			
POLYANTHA ROSES				
	Chatillon			
	Golden Salmon			
	Ideal			
	Red Lafayette			
FLOWERING SHRUBS				
	Althea (Double Red)			
	" (White)			
	" (Semi-double Purple)			
	Barberry (Red Leaf)			
	Butterfly Bush (Red)			
	Butterfly Bush (Lavender)			
	Crape Myrtle (New Red)			
	Crape Myrtle (White)			
	Crape Myrtle (Dwarf Blue)			
	Cydonia Japonica			
	(Flowering Quince)			
	Flowering Dogwood			
	" Crab, Bechtels			
	" Peach (Pink)			
	" Peach (White)			
	" Peach (Red)			
	Forsythia, (Golden Bells)			
	Hypericum (Gold Fl'wr)			
	Lantana			
	Lilac (Persian)			
	Pomegranate (Flowering)			
	Prunus Pissardi			
	Red Bud (American)			
THIRD TOTAL				
(Carry Forward to Top of Next Column)				

QUANTITY	VARIETY	SIZE	PRICE EACH	TOTAL
(Bring Third Total Forward to Here)				
	Redwing			
	Spiraea Prunifolia			
	Spiraea Reevesiana			
	Spiraea Vanhouttei			
	Tamarix Improved			
	Tamarix Hispida			
	Weigela Rosea			
	Pussy Willow			
VINES				
	Honeysuckle, (Red)			
	" (Pink)			
	Halls Evergreen			
	Wisteria (Blue)			
	" (Purple)			
	" (White)			
	" (Utterback, Blue)			
	" (Multijuga, Pink)			
HEDGE				
	Amoor River Privet			
	Boxwood			
	Euonymous Japonicus			
	Euonymous (Dwarf)			
EVERGREENS—Coniferous				
	Berckman's Arborvitae			
	Blue Spire Arborvitae			
	Bonita Arborvitae			
	Cannarti Juniper			
	Chandler's Silver Juniper			
	Chinese Blue Col. Juniper			
	Globe, Dwarf Gold Arb.			
	Hillspire Juniper			
	Irish Juniper			
	Italian Cypress			
	Pfitzer Juniper			
	Silver Glow Juniper			
	Tamariscifolia Juniper			
EVERGREENS—Broadleaf				
	Abelia			
	Cherry Laurel			
	Eleagnus			
	Euonymous Japonicus			
	Euonymous (Dwarf)			
	Holly (Burfordi)			
	Gardenia Fortunei			
	Italian Jasmine			
	Ligustrum (Waxleaf)			
	Ligustrum (Japanese)			
	Mahonia			
	Nandina			
	Photinia			
	Pyracantha (Red berry)			
	" (Orange berry)			
	Senisa (Purple Sage)			
PERENNIALS				
	Hibiscus 50c each prepaid			
	Double Red			
	Single Red			
	Giant Pink			
	Red Perennial			
	Justicia 50c each			
	Chrysanthemums			
	Dozen \$1.25			
	10 ea. 10 var. \$9.00			
FINAL TOTAL				

We exercise great precaution in keeping varieties true to name. Should any variety prove untrue, Gray Nursery will, with proper proof, replace or refund the purchase price. It is mutually agreed between Gray Nursery and their customers, that the Gray Nursery will not be liable for more than the original purchase price, and that this order is subject to our current catalog guarantee. We do not guarantee plants to live or grow.

DO NOT DESTROY